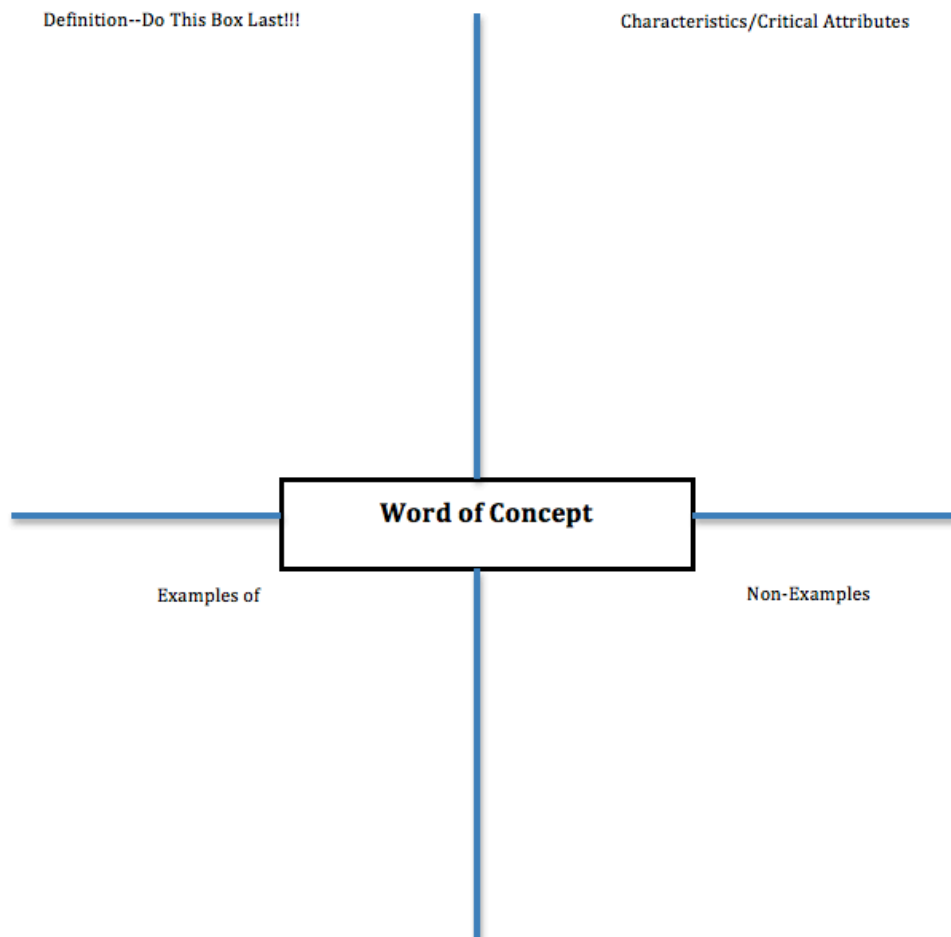


## Vocabulary Workshop—AISA 2015 Annual Conference

### Fruyer Model



### Fruyer Model

Definition  
Do This Box Last!

*A substance to flavor  
desserts and other foods  
that many people adore  
for its texture and flavor.*

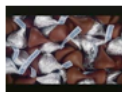
Essential Attributes/  
Characteristics

- Dark brown in color
- Some varieties have health benefits
- Mixes well with sugar and butter
- Semi-addictive
- Yummy when prepared well

### Chocolate

Examples of things that are made of chocolate

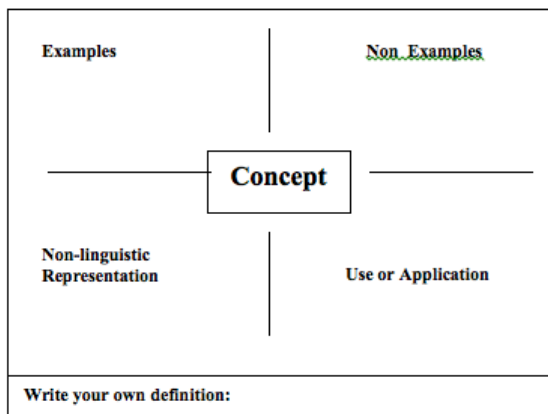
- Fudge
- Fudge cake
- Fudge sauce



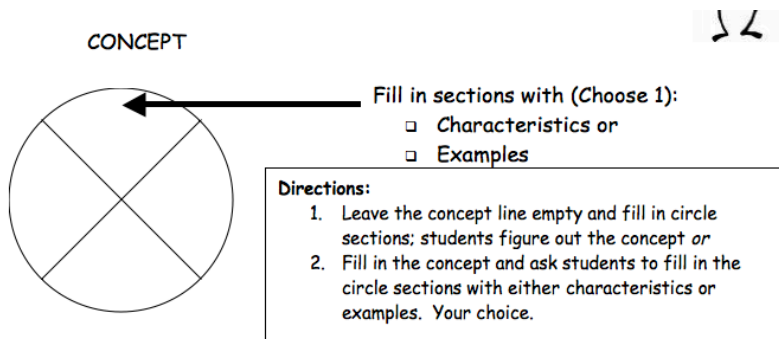
Non-Examples--things not made out of chocolate



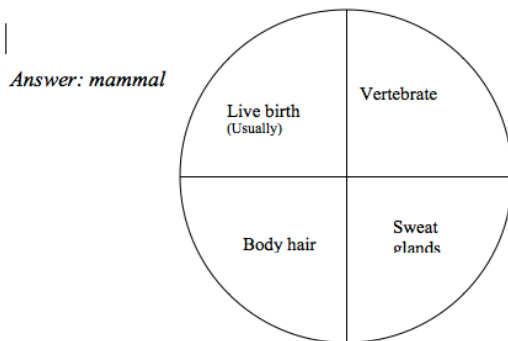
### Another version of Frayer



### Concept Circles



Example: \_\_\_\_\_



What is it? \_\_\_\_\_ Example

### Linear Array (Janet Allen strategy)

Shows a continuum of topics from one concept to another at either end of a spectrum:

**Valley** *plain* *escarpment* *plateau* *foothills* **Mountain Range**

### Vocabulary PreAssessment

Directions: Sort these words into the appropriate boxes below. Please think carefully about how well you understand the use of these words in the world of art.

*canvas color wheel contrast foreground hue linear medium opaque perspective  
primary colors symmetry transparent value*

I don't have a clue what this word means	I've seen this word, but I'm really not sure what it means.	I have a pretty good idea what this word means, but don't test me yet!	I've got it! I can teach this word to the class.

### Word Walls

- **Make word walls interactive (many of these ideas are adapted from the work of Isabel Beck)**
  - **Everyone one up:** *Raise your hand and when I call on you, tell me the definition of one of these words.*
  - **First one out the door:** *Raise your hand and use one of our words in*

*a sentence, and you can be the first one in line to leave for lunch!*

- Use them to **review and summarize** information.
  - *Emily, can you tell us how photosynthesis and respiration are related?*
  - *Harry, please compare and contrast photosynthesis and respiration.*
  
- **Use pop culture** to provide students practice with words in different contexts. For example, think of the words—evasive, pinnacle & prevaricate.
  - Find a character in a video or online game who could be described as **evasive**.
  - Find some characters on TV who are at the **pinnacle** of their careers
  - Think of a character in movie who **prevaricates**
  
- **Use sentence stems** that require students to demonstrate their understanding of a word by finishing the sentence:
  - The stairs to the building were **dilapidated** so....
  - My little brother has an **uncanny** way of...
  
- **Create a scenario** by connecting vocabulary words in sentence or question and have students respond:
  - Would a **contemporary** of George Washington consider allowing women to vote a **radical** idea?
  - Would you be **forthcoming** if you were in the process of **dissembling** to your parents?
  -
  
- **Employ them to help second language learners**
  - Point to them when you use them in conversation
  - Have partners turn and share by using them in sentences with one another

A PDF of the complete set of presentation slides is available for download at

<http://jillspencer.org/resources/>

Additional vocabulary resources can be found at <http://portaportal.com/>

Guest Name: spenceraisa