

nwea Professional Learning

map GROWTH

Turn learning evidence into instructional action

Activate MAP® Growth™ with professional learning experiences that build basic product-use capacity, hone assessment literacy, improve goal setting and responsive instructional planning, and build deeper data competency.

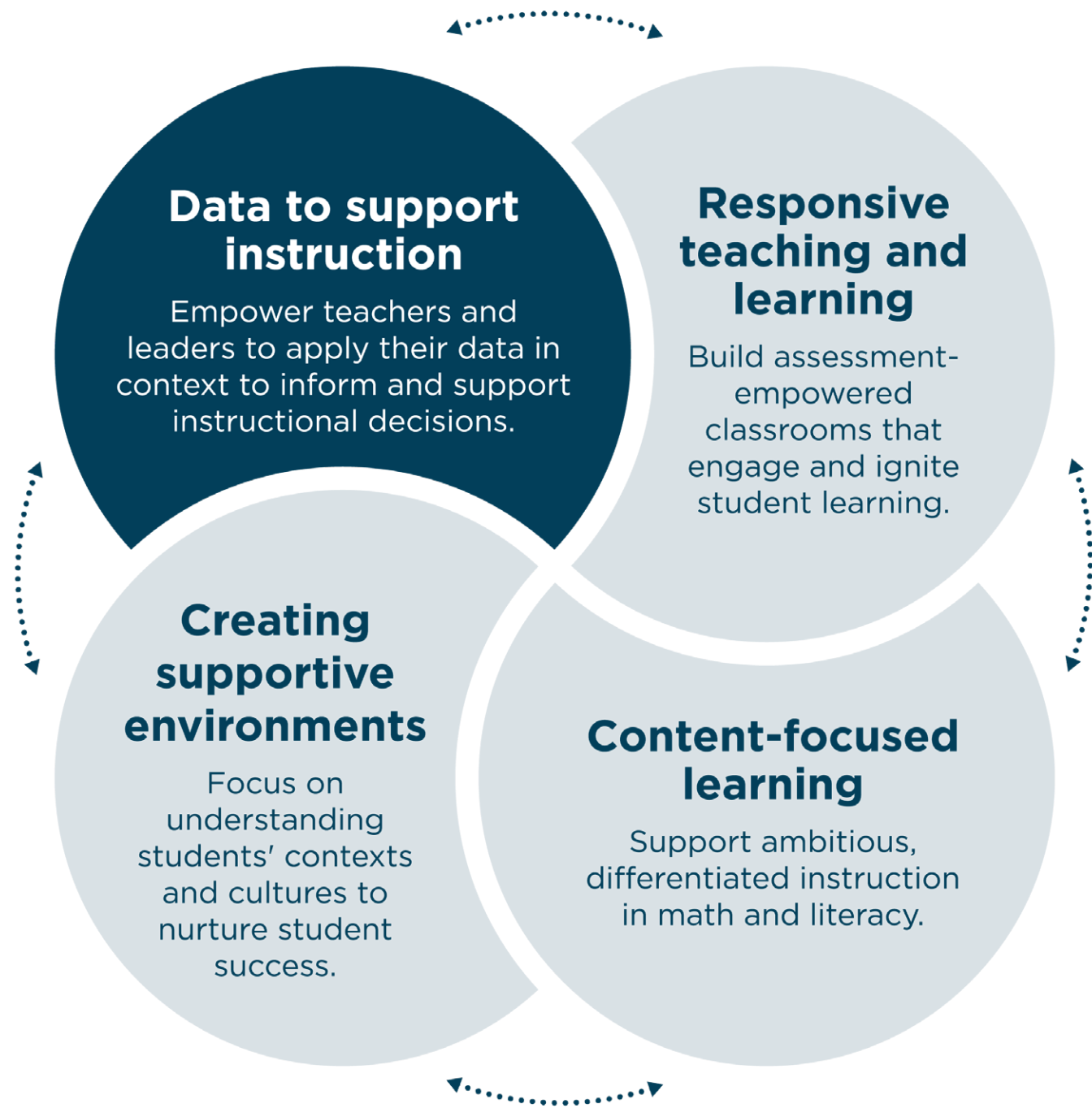


Professional learning that drives instructional change

Teachers demand and deserve the opportunity to grow, learn, and develop as professionals. NWEA® Professional Learning engages teachers in collaborative conversations that foster high-quality, ambitious instruction that improves student outcomes.

We develop professional practice in the four critical, interconnected categories that help educators make the most instructional impact.

The MAP Growth professional learning suite is part of the Data to Support Instruction series.



Available offerings

MAP Growth basics

Get ready for a successful implementation, gain a solid understanding of what makes MAP Growth unique, and explore resources that can help inform the process. Learn how to administer the assessments and begin to understand the importance of engaging students and leveraging data to inform instruction.

Delivery options tailored to meet your needs



Onsite learning

Face-to-face sessions with a consultant



Virtual learning

Live online instruction

Which duration is right for me?

1-hour sessions provide:

- A high-level overview
- Opportunities to brief larger groups in a shorter amount of time
- Flexible scheduling for before- or after-school meetings

2-hour sessions provide:

- Foundational learning
- Opportunities to use new learning with personalized practice
- Flexible scheduling for after school or part of a learning day

3-hour sessions provide:

- In-depth learning
- Opportunities to connect learning to student outcomes
- Ample time for discussion, collaboration, and reflection

FOR TEACHERS

	MAP Growth basics for teachers		MAP Growth basics: Introduction (for both teachers & leaders)	MAP Growth basics: Proctoring*
	3-hour agenda Onsite/Virtual	2-hour agenda Virtual	1-hour agenda Virtual	1-hour agenda Virtual
Hour 1	Understand what makes MAP Growth unique and meaningful	Understand what makes MAP Growth unique and meaningful	Understand what makes MAP Growth unique and meaningful	Learn the required steps to proctor MAP Growth assessments
Hour 2	Learn the required steps to proctor MAP Growth assessments	Learn the required steps to proctor MAP Growth assessments		
Hour 3		Navigate a sample assessment and consider strategies for student preparation and motivation		

*For users of both MAP Growth and MAP Reading Fluency™, a 2-hour combined version of this session is available in a virtual format.

FOR LEADERS

	MAP Growth basics for leaders		MAP Growth basics: Introduction (for both teachers & leaders)
	3-hour agenda Onsite/Virtual	2-hour agenda Virtual	1-hour agenda Virtual
Hour 1	Understand what makes MAP Growth unique and meaningful	Understand what makes MAP Growth unique and meaningful	Understand what makes MAP Growth unique and meaningful
Hour 2	Learn the required steps to proctor MAP Growth assessments	Make decisions about how MAP Growth will be used and who will be involved	
Hour 3	Make decisions about how MAP Growth will be used and who will be involved		

Available offerings

Applying reports

Comfortable with the basics of administering MAP Growth? Now get hands on with your reports. Learn to access, interpret, and apply MAP Growth data. Then plan how to use your data to inform ongoing work, with a particular focus on goal setting with students.

Delivery options tailored to meet your needs



Onsite learning

Face-to-face sessions with a consultant



Virtual learning

Live online instruction

Which duration is right for me?

1-hour sessions provide:

- A high-level overview
- Opportunities to brief larger groups in a shorter amount of time
- Flexible scheduling for before- or after-school meetings

2-hour sessions provide:

- Foundational learning
- Opportunities to use new learning with personalized practice
- Flexible scheduling for after school or part of a learning day

3-hour sessions provide:

- In-depth learning
- Opportunities to connect learning to student outcomes
- Ample time for discussion, collaboration, and reflection

FOR TEACHERS

	Applying MAP Growth reports: Essential reports for teachers	MAP Growth achievement reports for teachers	MAP Growth reports for teachers
	3-hour agenda Onsite/Virtual	2-hour agenda Virtual	1-hour agenda Virtual
Hour 1	Learn how to navigate key reports in MAP Growth	Learn how to navigate key reports in MAP Growth	Gain an introduction to class and student achievement reports in MAP Growth
Hour 2	Explore student-centered decisions that are informed by MAP Growth data	Explore student-centered decisions that are informed by MAP Growth data	Gain an introduction to class and student growth reports in MAP Growth
Hour 3	Apply and interpret MAP Growth data and related assessment results		

Applying MAP Growth reports: Student goal setting

	3-hour agenda Onsite/Virtual	2-hour agenda Virtual
Hour 1	Use MAP Growth data to support a goal setting process with students	Use MAP Growth data to support a goal setting process with students
Hour 2	Explore ways to involve students in the process to increase their motivation, sense of ownership, and likelihood of success	Explore ways to involve students in the process to increase their motivation, sense of ownership, and likelihood of success
Hour 3	Identify reports and resources to share with students and families	

Available offerings

Applying reports (cont.)

Comfortable with the basics of administering MAP Growth? Now get hands on with your reports. Learn to access, interpret, and apply MAP Growth data. Then plan how to use your data to inform ongoing work, with a particular focus on goal setting with students.

Delivery options tailored to meet your needs



Onsite learning

Face-to-face sessions with a consultant



Virtual learning

Live online instruction

Which duration is right for me?

1-hour sessions provide:

- A high-level overview
- Opportunities to brief larger groups in a shorter amount of time
- Flexible scheduling for before- or after-school meetings

2-hour sessions provide:

- Foundational learning
- Opportunities to use new learning with personalized practice
- Flexible scheduling for after school or part of a learning day

3-hour sessions provide:

- In-depth learning
- Opportunities to connect learning to student outcomes
- Ample time for discussion, collaboration, and reflection

FOR LEADERS

	Applying MAP Growth reports: Essential reports for leaders		MAP Growth achievement reports for leaders	MAP Growth reports for leaders
	3-hour agenda Onsite/Virtual	2-hour agenda Virtual	1-hour agenda Virtual	1-hour agenda Virtual
Hour 1	Use MAP Growth and other assessment data to identify school- or grade-level trends in achievement data	Use MAP Growth and other assessment data to identify school- or grade-level trends in achievement data	Gain an introduction to district-, school-, and grade-level achievement reports in MAP Growth	Gain an introduction to district-, school-, and grade-level growth reports in MAP Growth
Hour 2	Set goals and develop aligned plans, considering curriculum and instruction, resources, and professional learning needs	Learn how to monitor testing and completion rates through operational reports to identify next steps for implementation*		
Hour 3	Consider how MAP Growth data relate to district-, school-, and grade-level goals			

*Participants must be assigned one of the following roles: school assessment coordinator, district assessment coordinator, data administrator

Available offerings

Informing instruction

Discover classroom applications of MAP Growth reports. Support differentiated instruction and meet the needs of every student through responsive instruction using your MAP Growth results.

Delivery options tailored to meet your needs



Onsite learning

Face-to-face sessions with a consultant



Virtual learning

Live online instruction

Which duration is right for me?

1-hour sessions provide:

- A high-level overview
- Opportunities to brief larger groups in a shorter amount of time
- Flexible scheduling for before- or after-school meetings

2-hour sessions provide:

- Foundational learning
- Opportunities to use new learning with personalized practice
- Flexible scheduling for after school or part of a learning day

3-hour sessions provide:

- In-depth learning
- Opportunities to connect learning to student outcomes
- Ample time for discussion, collaboration, and reflection

FOR TEACHERS

MAP Growth informing instruction: Responsive planning*

	3-hour agenda Onsite/Virtual	2-hour agenda Virtual
Hour 1	Use MAP Growth data and other assessment results to identify trends in student needs	Use MAP Growth data and other assessment results to identify trends in student needs
Hour 2	Learn the responsive planning process and consider pacing, differentiation, scaffolding, and available resources	Learn the responsive planning process and consider pacing, differentiation, scaffolding, and available resources
Hour 3	Apply to classroom practices and plan for responsive term- or unit-level instruction	

*For users of both MAP Growth and MAP Reading Fluency, a 3-hour combined version of this session is also available in both onsite/virtual formats.



Available offerings

Focusing on growth

Learn how to utilize MAP Growth data to reflect on growth across various levels, including classroom, grade, school, and district. Explore how to identify patterns and trends that can inform school or district goals and lead to planning. Spend time creating plans to incorporate the achievement and growth data to impact school and district goals.

Delivery options tailored to meet your needs



Onsite learning

Face-to-face sessions with a consultant



Virtual learning

Live online instruction

Which duration is right for me?

1-hour sessions provide:

- A high-level overview
- Opportunities to brief larger groups in a shorter amount of time
- Flexible scheduling for before- or after-school meetings

2-hour sessions provide:

- Foundational learning
- Opportunities to use new learning with personalized practice
- Flexible scheduling for after school or part of a learning day

3-hour sessions provide:

- In-depth learning
- Opportunities to connect learning to student outcomes
- Ample time for discussion, collaboration, and reflection

FOR LEADERS

MAP Growth: Focusing on growth

	3-hour agenda Onsite/Virtual	2-hour agenda Virtual
Hour 1	Explore Growth Reports at the class, grade, school, and district levels.	Explore Growth Reports at the class, grade, school, and district levels.
Hour 2	Consider how growth trends may inform school or district goals and plans.	Consider how growth trends may inform school or district goals and plans.
Hour 3	Apply achievement and growth data to plans and goals.	



Power up your professional learning with these additional services:

Want to deepen the learning with additional time and space for application and practice?

Instructional coaching for teachers

Continue the learning from any of our offerings by adding collaborative coaching. A highly qualified thought partner and practitioner will lead teachers through an inquiry-based coaching cycle to deliver a highly responsive and contextualized experience that takes the learning from theory to practice, using evidence-based and research-driven methods to build teacher capacity, efficacy, and instructional skill.

Want to measure the impact of professional learning on teaching effectiveness and student learning?

Learning and evaluation services

This set of tailored tools and services measures the impact of professional learning on participants, school systems, and students. Beginning with a comprehensive needs assessment, our evaluation services are fully integrated with the planning and delivery of your professional learning to ensure the unique learning needs of your district are being met.





Make meaningful, measurable
instructional change.

Discover more at [NWEA.org/professional-learning](https://nwea.org/professional-learning) or by
contacting us at 866.654.3246.



NWEA is a mission-driven organization that supports students and educators worldwide by providing assessment solutions, insightful reports, professional learning offerings, and research services. Visit [NWEA.org](https://nwea.org) to find out how NWEA can partner with you to help all kids learn.

© 2023 NWEA. NWEA and MAP are registered trademarks, and MAP Growth and MAP Reading Fluency are trademarks, of NWEA in the US and in other countries.

The names of other companies and their products mentioned are the trademarks of their respective owners.

MAR23 | WELTSK5364